

200 HERALD JOURNAL BLVD

Spartanburg, SC

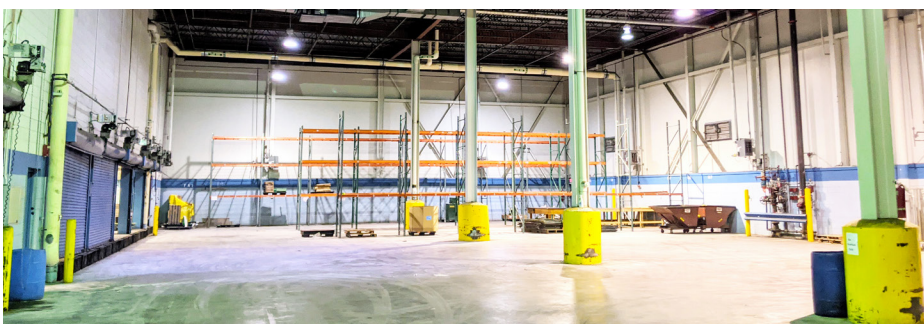
\$3.25/SF NNN



±42,679 SF Industrial Space for Sublease

FEATURES

- ±42,679 RSF of industrial space for lease on 16.7 acres of land
- Property has 3 docks with pit levelers, one drive-in door, ceiling heights up to 30' in one bay, and ±6,408 SF of office space on two floors
- The site is located on Herald Journal Blvd fronting I-85 Business.
- Conveniently located just 1.0 mile from I-85, 21 miles to GSP International Airport and 22 miles to the Inland Port.



Bobby Lyons, SIOR, CCIM

864.590.3476

bobby@lyonsindustrial.com

Luke Lyons

864.838.1886

luke@lyonsindustrial.com

This information has been taken from sources deemed to be reliable. No warranty or representation, expressed or implied, is made to the accuracy of this information. Any and all prices, lease rates or other pertinent data may change without notice. Interested parties should conduct their own investigations and rely solely on their findings.



LYONS
INDUSTRIAL PROPERTIES
SALES • LEASING • DEVELOPMENT